



Stübbe®
Partner for Solutions



VALVES

PUMPS | VALVES | INSTRUMENTATION



STANDARDS IN PERFECTION AND SAFETY

ASV Stübbe is an international manufacturer of pumps, valves, instrumentation and control systems made of thermoplastics.

As a system supplier, we offer a wide range of high-quality solutions for the handling of aggressive, corrosive and water polluting substances.

Our products can be found in many demanding industries

ENVIRONMENTAL TECHNOLOGY

With more than 50 years of experience we have the necessary expertise for the design of pumps and tubing systems with regard to chemical resistance considerations.

The benchmark for our success is customers' satisfaction. Our permanent objective is to provide our customers with the most economical solution combined with a maximum of reliability.



Quality and efficiency

- Sea water desalination
- Wastewater treatment
- Exhaust air scrubbers
- Biogas treatment
- Ultra-pure water
- Process water
- Manufacturing of bio fuels

...



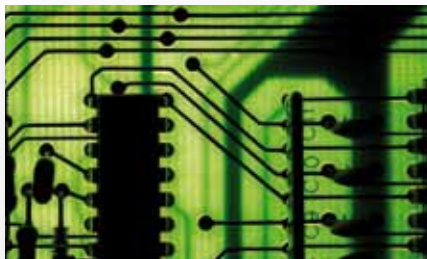
Stübbe®
Partner for Solutions



SURFACE TECHNOLOGY

CHEMICAL INDUSTRY

METALLURGY



Competence and innovation

- PCB manufacture
- Solar cell manufacturing
- Electroplating
- Glass finishing
- Coating lines

...



Perfection and safety

- Chemical plant manufacturing
- Acid production
- Fertilizer production
- Chlor-alkali electrolysis

...



Reliability and resistance

- Ore extraction
- Copper electrolysis
- Acid regeneration
- Nickel electrolysis
- Steel pickling

...

PRODUCT RANGE



Valves

Our wide range of valves offers solutions for almost any application. Next to our extensive standard range also customised solutions can be realised for your specific process requirements.



Pumps

ASV Stübbe produces pumps for the safe transport of aggressive and corrosive liquids of up to 400m³/h. Our range includes horizontal as well as vertical pumps from highly corrosion and wear resistant materials.



Instrumentation

Our systems for filling level, pressure and flow control are of robust design and suitable for fast end efficient systems integration. We manufacture corrosion resistant instrumentation technology for tank and plant builders.



VALVES



Ball valves	6
C 200	8
C 110	10
C 10	11
C16	12
Butterfly valves	14
K 210	16
K 220	17
Diaphragm valves	18
MV 308	19
MV 309	20
MV 310	21
Monitoring valves	22
SF 305	23
SRV 303	24
RSK 500	24
KRV 360	25
BE 891	25
Solenoid valves	26
Typ 150	26
Typ 160	27
Fittings	28
Accessories	30



BALL VALVES

Typ	C 200	C 110	C 10	C 16	
Size	DN 10 - DN 50	DN 65 - DN 150	DN 10 - DN 50	DN 50 - DN 150	
Materials	<div>PVC-U</div> <div>PP</div> <div>PVDF</div>	<div>PVC-U</div> <div>PP</div> <div>PVDF</div>	<div>PVC-U</div> <div>PP</div>	<div>PVC-U</div>	
Sealing elements	EPDM, FPM	EPDM, FPM	EPDM, FPM	FPM	
Actuation	Hand lever, electrical, pneumatic	Hand lever, electrical, pneumatic	Hand lever, electrical, pneumatic	Hand lever, electrical, pneumatic	
Features	Proportional ball as option	up to DN 150	ultra low dead volume	ultra low dead volume	



C 200



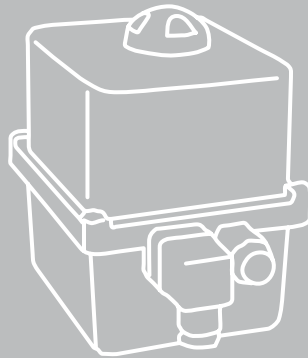
C 110



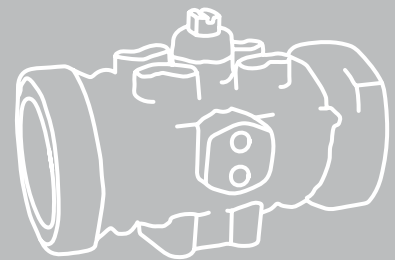
Actuators



ASV Stübbe offers a range of easy-to-assemble actuators for ball and butterfly valves. The available actuators range from simple turn-actuators to advanced solutions with ASI-Bus interfaces or for ATEX-areas.



The reliable electrical standard actuator comes with two adjustable end switches and an integrated manual override and can be upgraded with a host of additional options.



Robust pneumatic actuators are available in NC (normally closed), NO (normally open) and DA (double acting) versions.



C 10



C 16

BALL VALVE

C 200

Sizes DN 10 - DN 50



Ball valve C 200

The C 200 is a newly designed ball valves with many advantages for demanding engineering and plant building applications. Next to the ergonomically shaped handle with end position locking device, the integrated mounting plate allows a user-friendly and cost effective installation of the valve. High-grade EPDM or FPM soft seals and PTFE ball seals complete the professional overall appearance.



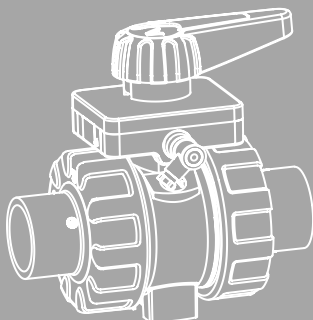
Proportional ball

By means of a proportional ball the standard ball valve can be upgraded to a regulation valve with linear flow characteristics. Due to its simple automation with electrical actuators this feature constitutes an economic alternative to diaphragm valves.

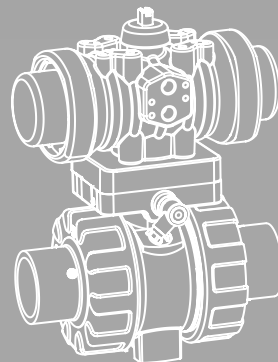




Stübbe[®]
Partner for Solutions



with limit switch box



with actuator and mounting set
(analog limit switch box with reinforced top plate)

BALL VALVE

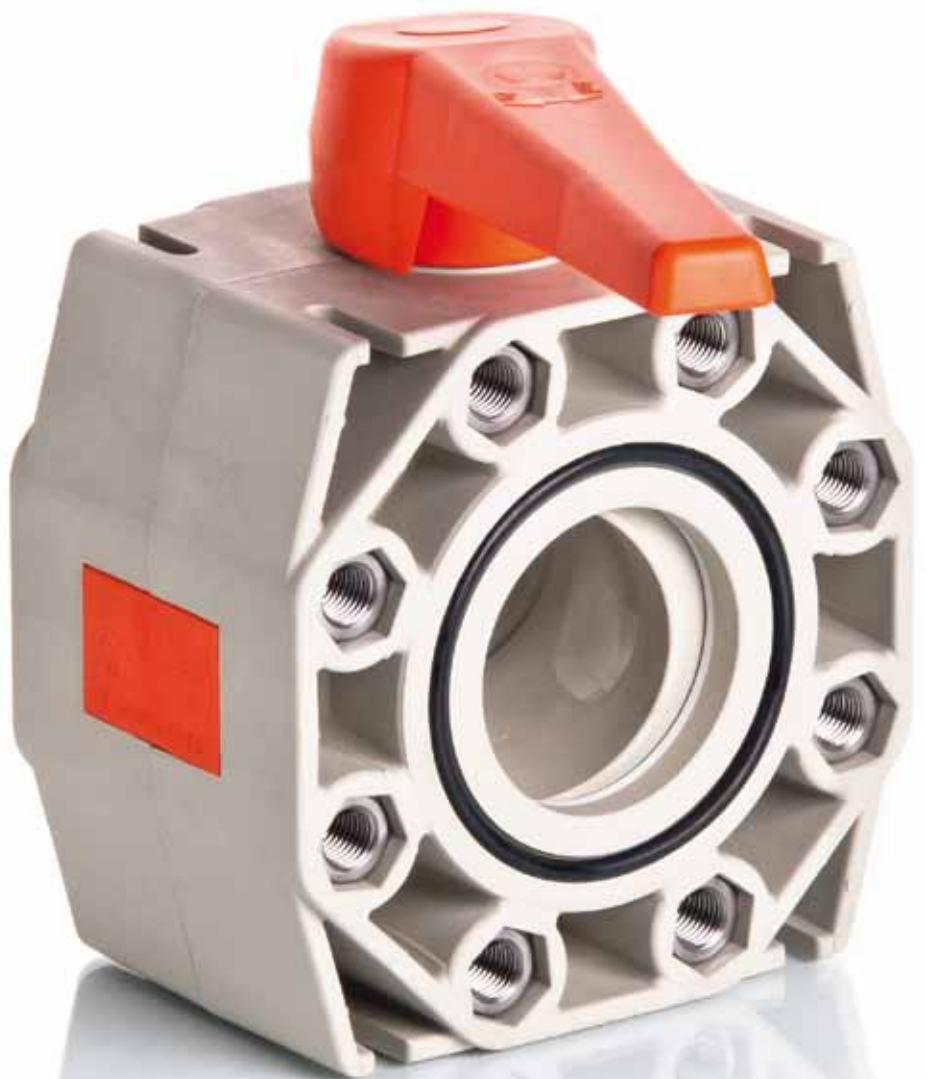
C 110

Sizes DN 65 - DN 150



Ball valve C 110

The C 110 is setting the standards for chemical ball valves in the range of up to DN 150. Whenever maximum openings and low flow resistances are required, the C110 is being used. The 2-part, screw-mounted housing guarantees high pressure resistance. A host of mounting versions allows the best possible assembly. In a wafer-type version the valve can be mounted directly between DIN flanges and allows full flow while being extremely compact in size.





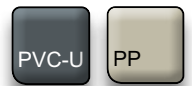
Stübbe[®]
Partner for Solutions

BALL VALVE C 10

Sizes DN 15 - DN 50

Ball valve C 10

The C 10 is a compact special ball valve, which can be found in many industrial applications. Due to its special production process the dead volume between ball and housings has been reduced to the absolute minimum. The C 10 is suitable for applications where standard ball valves are disqualified because of crystallising fluids or higher cleaning standards. The ball valve has the same installation dimensions as the Profi 101 and also comes with DIN ISO 8063 union nuts.



BALL VALVE

C 16

Sizes DN 50 - DN 150



Ball valve C 16

The C16 is the tried and tested classic design of our special ball valves. It features an ultra low dead volume. The stainless steel stem allows high actuation torques.

Used in sludge presses draining in water treatment, vacuum systems for slaughter-house waste and in the food industry the C16 combines the chemical resistance of a plastic valve with the mechanical strength of a stainless steel armature.

Special ball valve for toughest applications

Features:

- ▶ Ultra low dead volume design with full encapsulated PE-Ball.
- ▶ Optional also available with a high-molecular PE-ball with highest mechanic resistance against wear and tear.
- ▶ Fully encapsulated stainless steel stem for highest operational torques.
- ▶ PP/steel flanges in electro-plating quality or weight reduced GFR-flanges.
- ▶ Extra-long actuation handle, optional with locking devices.



Stübbe[®]
Partner for Solutions



BUTTERFLY VALVES

Typ	K 210	K 220
Sizes	DN 50 - DN 200	DN 250 - DN 400
Materials	PVC-U PP PVDF	PVC-U PP PVDF
Sealing element	EPDM, FPM	EPDM, FPM
Actuation	Hand lever, Gear box, electrical, pneumatic	Gear box, electrical, pneumatic
Sealing system	stirrup seal	liner

ASV butterfly valves are suitable for closing or flow reduction of media streams in pipe lines of up to DN 400. The narrow but robust plastic design as well as the high quality sealing systems meet the industry requirements towards che-

mical resistance and reliable mechanical parts. Because of their soft seals the butterfly valves are insensitive towards small contaminations or particles in the fluid.

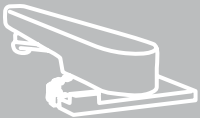
Stirrup seals on the wafer of the K210 (lh) and liner seals in the housing for the K 220 (rh).



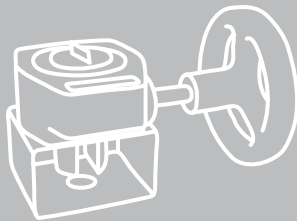


Stübbe®
Partner for Solutions

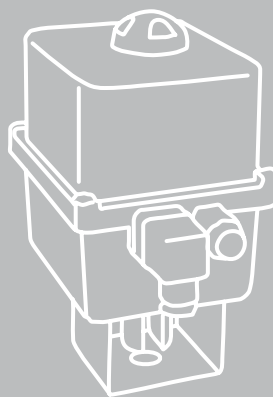
Actuators



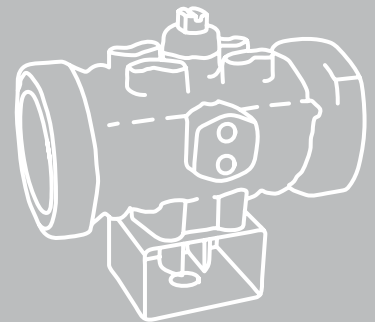
Hand lever with
locking function



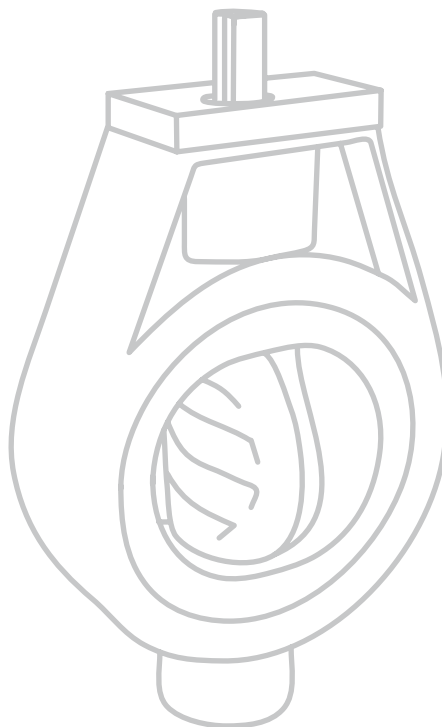
Gear box with Hand wheel
for high closing torques



Electrical actuation



Pneumatic actuation



For the automation of butterfly valves
higher torque actuators have to be
used compared to ball valve.

BUTTERFLY VALVE K 210

Sizes DN 50 - DN 200



Butterfly valve K 210

The chemical industry standard K210 is fitted with a stirrup seal around the valve plate. The stem is made of high grade stainless steel and protected by a double O-Ring seal against contact to the aggressive fluids. Additional PVDF-sleeves reduce the actuation torque of the centric valve to a minimum.





Stübbe[®]
Partner for Solutions

BUTTERFLY VALVE K 220

Sizes DN 250 - DN 400



Butterfly valve K 220

This massive chemical industry standard K220 is being used for shutting or throttling purposes in bigger tube diameters. The internal liner acts also as flange seal. All manual valves are supplied with an adjustable hand wheel gear box.

DIAPHRAGM VALVE

Typ	MV 308	MV 309	MV 310
Sizes	DN 12 - DN 15	DN 15 - DN 32	DN 15 - DN 100
Materials	<div>PVC-U</div> <div>PP</div> <div>PVDF</div>	<div>PVC-U</div> <div>PP</div> <div>PVDF</div>	<div>PVC-U</div> <div>PP</div> <div>PVDF</div>
Sealing elements	EPDM, FPM	EPDM, FPM	EPDM, FPM
Actuation	pneumatic control pressure 6 bar	pneumatic control pressure 6 bar	Hand wheel, pneumatic control pressure 10 bar
Pressure range	PN 6	PN 6	PN 10

For fast closing, simple regulation purposes and fluids with particles diaphragm valves often are the most suitable solution. ASV Stübbe therefore offers a tried and tested range of these products.

The offer ranges from powerful options for up to 10 bar fluid pressure up to small sized solutions for the demand of modular engineering applications. All series are available with high-grade EPDM, FPM or PTFE-lined EPDM diaphragms.





Stübbe®
Partner for Solutions

DIAPHRAGM VALVE MV 308

Sizes DN 12 - DN 15



Diaphragm valve MV 308

The MV 308 is a very compact design and therefore best suitable for distribution modules or for realising switching functions in limited installation environments. The valve contains a stroke limiter and an optical position indicator as standard. It is designed for operation pressures of up to 6 bar.

DIAPHRAGM VALVE MV 309

Sizes DN 15 - DN 32



Diaphragm valve MV 309

The main feature of the new MV 309 diaphragm valve is its slim and compact design. It is available with EPDM, FPM or PTFE-lined EPDM diaphragm options. The compact but still powerful actuator has been designed for fluid pressures of up to 6 bar and comes with an integrated NAMUR interface. The valve body is standard sized and therefore exchangeable with the MV 310.



Stübbe[®]
Partner for Solutions

DIAPHRAGM VALVE MV 310

Sizes DN 15 - DN 100



Diaphragm valve MV 310

In combination with the pneumatic actuators the MV 310 is a reliable and economic valve with many options. By means of powerful pneumatic actuators pressures of up to 10 bar can be reliably shut off even in bi-directional flow situations.



MONITORING VALVES

Typ	SF 305	SRV 303	RSK 500	KRV 360	BE 891
Sizes	DN 15 - DN 100	DN 15 - DN 100	DN 40 - DN 200	DN 10 - DN 80	DN 10 - DN 80
Materials	PVC-U PP PVDF	PVC-U PP PVDF	PVC-U PP PVDF	PVC-U PP PVDF	PVC-U PP PVDF
Sealing elements	EPDM, FPM	EPDM, FPM	EPDM, FPM	EPDM, FPM	FPM
Function	Strainer	Angel seat check valve	Wafer check valve	Ball check valve Cone check valve*	Aeration valves
Options	-	-	Spring	Spring*	Spring



Strainer
SF 305



Angel seat check valve
SRV 303



Wafer check valve
RSK 500



Ball check valve
KRV 360



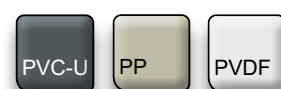
Aeration and ventilation
valves BE 891



Stübbe[®]
Partner for Solutions

STRAINER SF 305

Sizes DN 15 - DN 100



Strainer SF 305

Strainers protect sensitive components in the pipelines, e.g. pressure control valves or pumps from the risk of particle contamination. They are available with various mesh sizes and protect the installation from damage and down time.

MONITORING VALVES



Angel seat check valve SRV 303

The angel seat check valve SRV 303 in PVC is due to its special design without spring suitable for horizontal or vertical installation (always with piston upright). The PP and PVDF versions are equipped with a specially coated spring.

Sizes DN 15 - DN 100

Wafer check valve RSK 500

The wafer check valve RSK is a robust, industry type design. The installation adaptors, needed of the mounting of the RSK in the pipeline, replaces the flange adaptors or stub flanges and allows a maximum opening angle of the wafer. The strong hinge design sets the industrial standard. The valve can be installed in horizontal lines, and is with an optional integrated spring also suitable for use in vertical lines.

Sizes DN 40 - DN 200





Ball-/ Cone check valve KRV 360

The ball check valve KRV 360 is a gravitation actuated valve for a designated flow direction. It reliably avoids back pressure even at lowest differential pressure.

Sizes DN 10 - DN 80



Aeration and ventilation valve BE 891

The aeration/ventilation valve supports the filling and emptying of containers and tanks. In the version B895 with coated spring the valves act as a ventilation device for tubes and container only. When the pressure inside the system drops, air can enter via the valves against the spring force into the otherwise hermetically sealed system.

Sizes DN 10 - DN 80



SOLENOID VALVE TYP 150

Sizes DN 10 - DN 20



Solenoid valve Typ 150

Whenever fast and frequent switching is required solenoid valves are being used. Type 150 is a direct acting valve with a full plastic body up to DN 20. The sealing of the pilot unit happens by means of a PTFE bellow seal.





Stübbe®
Partner for Solutions



SOLENOID VALVE TYP 160

Sizes DN 15 - DN 50



Solenoid valve Typ 160

Type 160 is a pilot operated full plastic body valves which can ready short switching times in systems where no compressed air is available. The pilot unit of the valve is media isolated by means of a separating diaphragm. Because of its design the valve requires a minimum differential pressure of 0.3 bar for reliable operation.

TUBES AND FITTINGS

Sizes d 16 - d 225



Tubes and fittings

Only the perfect combination of all components guaranties the best overall performance of a system. ASV therefore offers tubes and fittings made by leading manufacturers as part of its scope of supply.

PVC-U d16 - d225

PVC-C d16 - d110

PP d20 - d225

PVDF d20 - d110





Stübbe[®]
Partner for Solutions



CONNECTING PARTS AND ACCESSORIES

Sizes d 16 - d 400

PVC-U

PP

PE

Flanges

Sizes d 16 - d 400

The PP/steel flanges are being tested at 30.000 volt acc. to electro-plating standards to guarantee the hermetic tightness of the PP coating and the highest chemical resistance.





Pipe clips

Sizes d 16 - d 32

Pipe clip banks

Sizes d 6 - d 28

Pipe clamps

Sizes d 40 - d 160

Clips and clamps made from PE and PP material up to d 160 allow a fast and easy installation of tubing systems and pipeline components.



SUBSIDIARIES AND PARTNERS

EUROPE:



Headquarter:

ASV Stübbe GmbH & Co. KG

Hollwieser Str. 5
D-32602 Vlotho, Germany
Tel. +49(0)5733 799-0
Fax +49(0)5733 799-5000
contact@asv-stuebbe.de
www.asv-stuebbe.de



ASV Stübbe España S.L.U.

Rambla Josep Mª Jujol
33-35 locales E1-F1
E-08970 Sant Joan Despí
Barcelona
Tel: +34 (0) 93 477 46 10
Fax: +34 (0) 93 477 46 11
yserrano@asv-stuebbe-spain.com



ASV Stübbe France SARL

Immeuble « Le Cérès »
21-23 rue du Petit Albi
BP 48453
95807 Cergy Pontoise Cedex
Tel: +33 (0) 1 30 75 10 45
Fax: +33 (0) 1 30 75 10 46
michel.janas@asv-stubbe.fr



ASV Stuebbe Ukraine TOV

Baseina Str., 5b, of. 30
01001 Kyiv
Tel: +38 044 303 93 64
Fax: +38 044 234 38 00
asv_ukraine@ukr.net

DISTRIBUTION PARTNERS:

Czech Republic
Denmark
Finland
Great Britain
Italy
Netherlands
Norway
Poland
Russia
Sweden
Australia
Canada
Chile
South Africa
Uzbekistan



Stübbe®
Partner for Solutions

CHINA:

✕ Beijing Branch

Rm. B1005-07, Lianhe International Mansion
South Rd. of East 3rd Ring Road, Chaoyang District
Beijing China 100022
Tel: +86 (10) 65673748
Fax: +86 (10) 65673780
asv-stuebbe@asv-stuebbe.cn

✕ ASV Stuebbe Pumps & Valves (ShenZhen) Co., LTD

Building H Songtai Industrial Park
No.222 Buxin Road, Guanlan
Shenzhen China 518110
Tel: +86 (0) 755-88 83 19 87
Fax: +86 (0) 755-29 83 20 80
asv-stuebbe@asv-stuebbe.cn

✕ Shanghai Branch

Rm. 102, Building 8, No. 3131 Jinshajiang Road,
Shanghai China 201804
Tel: +86 (0)21-63261281
Fax: +86 (0)21-63261282
asv-stuebbe@asv-stuebbe.cn

ASV Stuebbe Pumps & Valves (Suzhou) Co., LTD

No. 16 Nanguandu Road, Yuexi, Wuzhong
District, Suzhou, Jiangsu China 215104
Tel: +86 (0)512-66566846
Fax: +86 (0)512-66566932
contact@asv-suzhou.com

✕ Chengdu Branch

Rm. 2408, Building A, Government Plaza
No. 216, Lower Dongdajie Street
Chengdu, Sichuan, China 610015
Tel: +86 (0)28-86672976/ 86653723
Fax: +86 (0)28-86672387
asv-stuebbe@asv-stuebbe.cn



QUALITY MANAGEMENT AND SERVICE

► Reliability and chemical resistance





Stübbe®
Partner for Solutions

Service to us means 360° support for our customers. From the selection of the proper materials through to after sales service - use our expertise and experience to minimise your cost and effort and maximise your market impact.

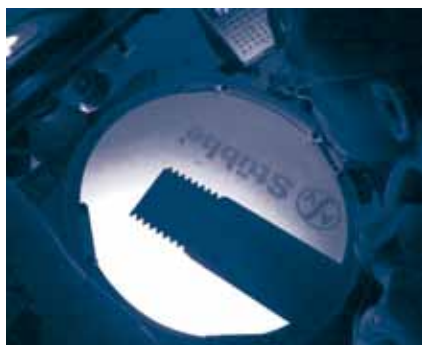
In-process inspections and quality control of components guarantee high quality final products.

Quality, perfection and reliability are the guiding principles of our company. After all, our products are used for the safe handling of water polluting and hazardous substances and have to reliably resist the most aggressive media.

Materials and products are permanently inspected in demanding quality tests in our own company laboratory.



Quality management
system certified according
to DIN EN ISO 9001:2008





Stübbe[®]
Partner for Solutions



ASV Stübbe GmbH & Co. KG
Hollwieser Str. 5
D-32602 Vlotho, Germany
Tel. +49(0)5733 799-0
Fax +49(0)5733 799-5000
contact@asv-stuebbe.de
www.asv-stuebbe.de